

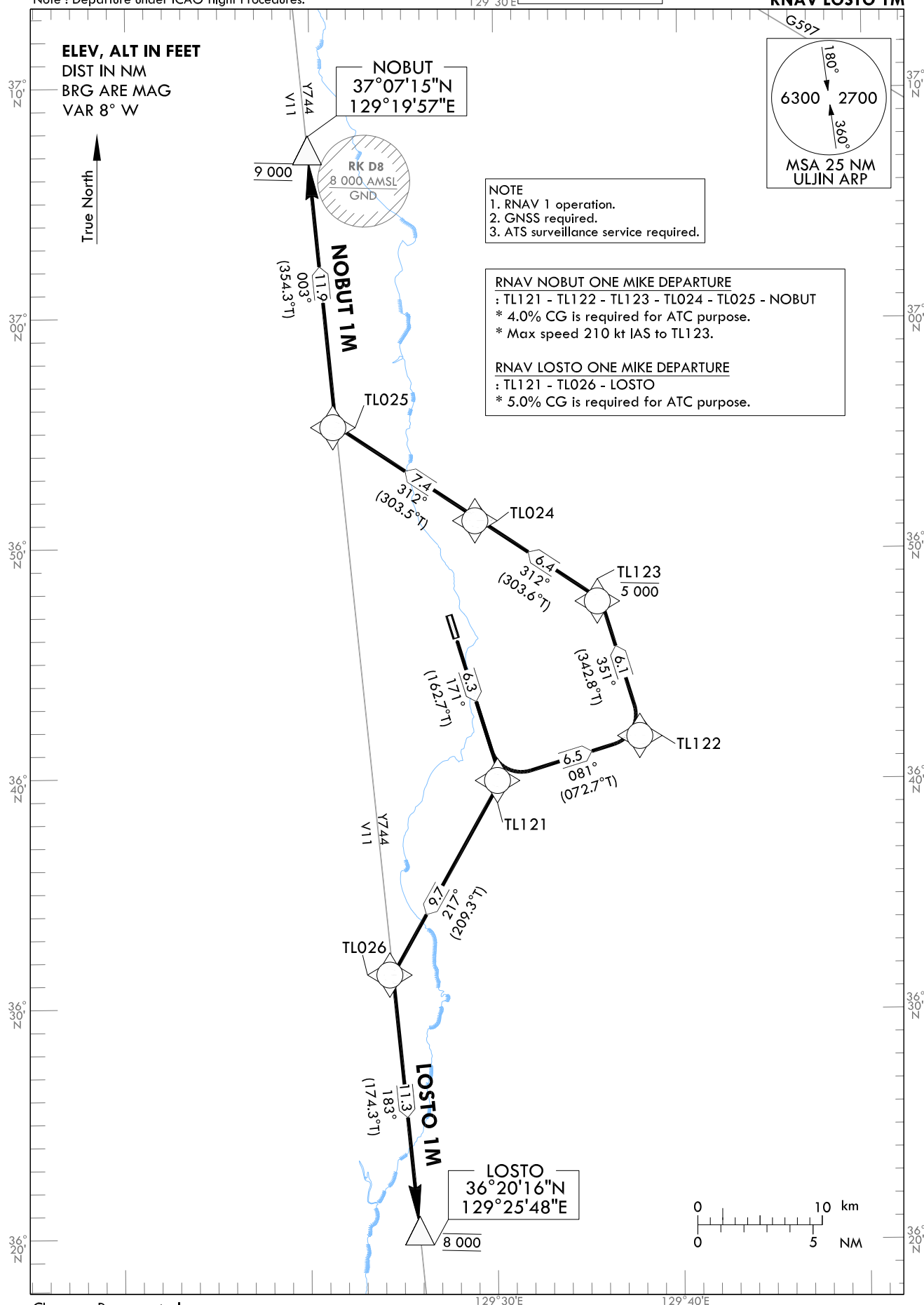
STANDARD DEPARTURE CHART
INSTRUMENT(SID) - ICAO

TRANSITION ALT 14 000
TRANSITION LVL FL 140

ULJIN	DEP	120.875
		317.65
ULJIN	TWR	118.55
		317.45

ULJIN/ULjin(RKTL)
RWY 17
RNAV NOBUT 1M
RNAV LOSTO 1M

Note : Departure under ICAO flight Procedures.



Change : Page control.

ULJIN/Uljin(RKTL)

RWY 17

RNAV NOBUT 1M

RNAV LOSTO 1M

AERONAUTICAL DATA TABULATION

Standard Instrument Departure Procedure Coding Tables

RNAV NOBUT 1M											
Serial Number	Path Descriptor	Waypoint Identifier	Fly-over	Course/Track °M(°T)	Distance (NM)	Turn direction	Altitude (ft)	Speed (kt)	Coordinates	VPA/TCH	Navigation specification
001	CF	TL121	-	171(162.7)	6.3	-	-	-210	36°39'57.5"N 129°30'16.9"E	-	RNAV 1
002	TF	TL122	-	081(072.7)	6.5	-	-	-210	36°41'53.2"N 129°37'60.0"E	-	RNAV 1
003	TF	TL123	-	351(342.8)	6.1	-	-5 000	-210	36°47'45.8"N 129°35'44.3"E	-	RNAV 1
004	TF	TL024	-	312(303.6)	6.4	-	-	-	36°51'17.2"N 129°29'07.5"E	-	RNAV 1
005	TF	TL025	-	312(303.5)	7.4	-	-	-	36°55'22.2"N 129°21'26.0"E	-	RNAV 1
006	TF	NOBUT	-	003(354.3)	11.9	-	@9 000	-	37°07'15.1"N 129°19'56.6"E	-	RNAV 1

RNAV LOSTO 1M											
Serial Number	Path Descriptor	Waypoint Identifier	Fly-over	Course/Track °M(°T)	Distance (NM)	Turn direction	Altitude (ft)	Speed (kt)	Coordinates	VPA/TCH	Navigation specification
001	CF	TL121	-	171(162.7)	6.3	-	-	-	36°39'57.5"N 129°30'16.9"E	-	RNAV 1
002	TF	TL026	-	217(209.3)	9.7	-	-	-	36°31'29.8"N 129°24'24.6"E	-	RNAV 1
003	TF	LOSTO	-	183(174.3)	11.3	-	@8 000	-	36°20'15.8"N 129°25'48.3"E	-	RNAV 1

STANDARD DEPARTURE CHART
INSTRUMENT(SID) - ICAO

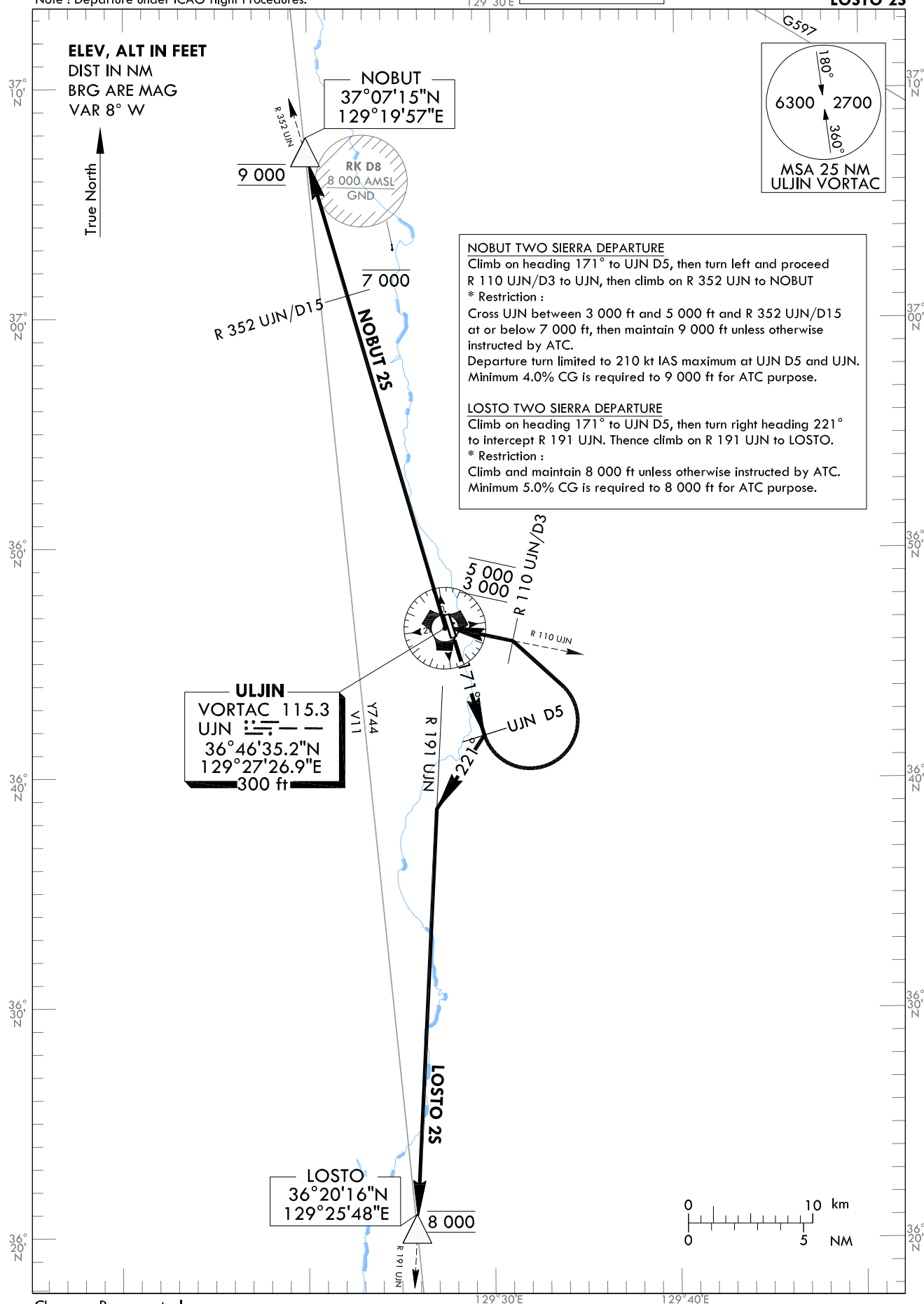
TRANSITION ALT 14 000
TRANSITION LVL FL 140

ULJIN	DEP	120.875
		317.65
ULJIN	TWR	118.55
		317.45

ULJIN/ULjin(RKTL)
RWY 17
NOBUT 2S
LOSTO 2S

Note : Departure under ICAO flight Procedures.

129°30'E



Change : Page control.

INTENTIONALLY

LEFT

BLANK

STANDARD DEPARTURE CHART
INSTRUMENT(SID) - ICAO

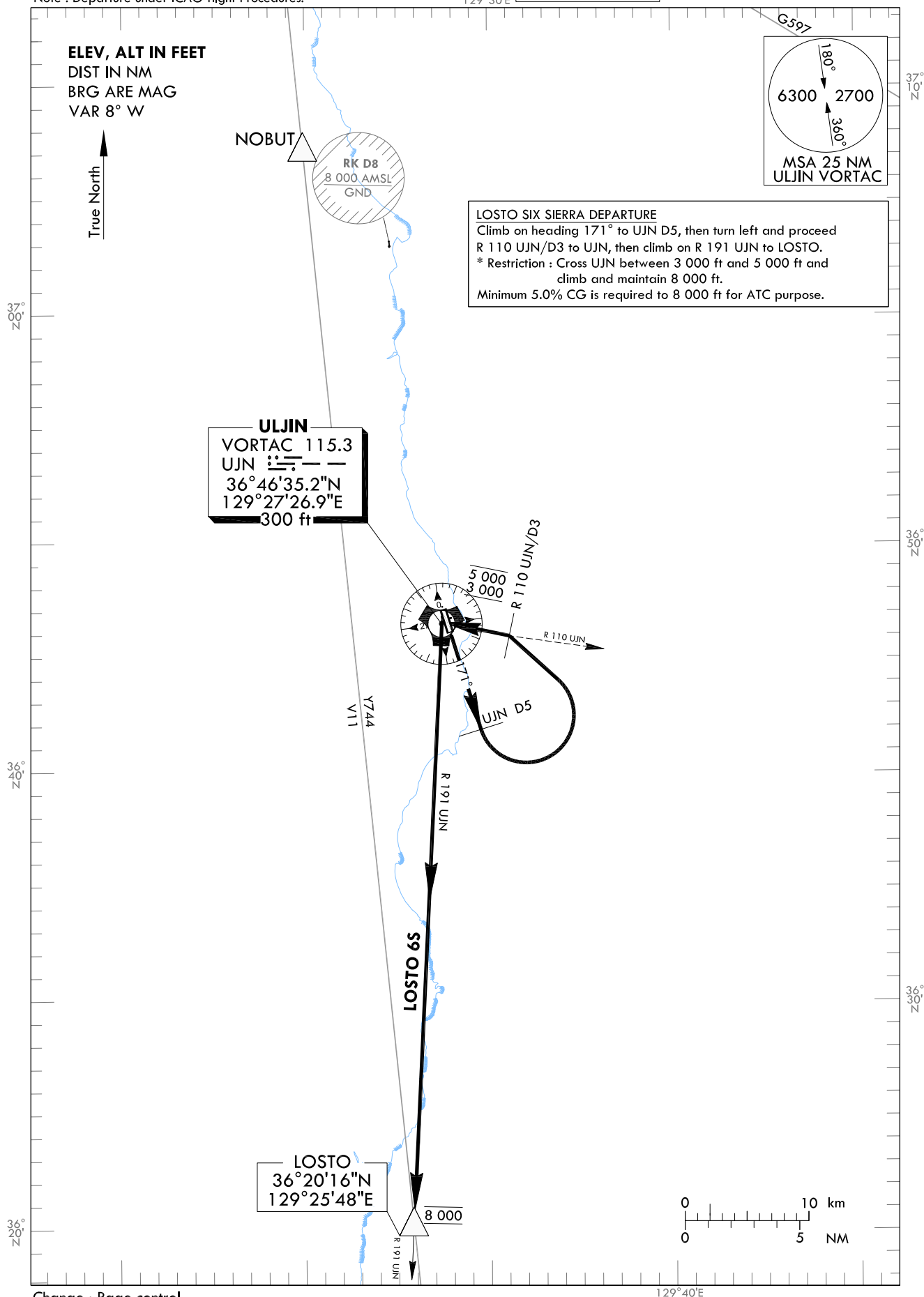
TRANSITION ALT 14 000
TRANSITION LVL FL 140

ULJIN	DEP	120.875
		317.65
ULJIN	TWR	118.55
		317.45

ULJIN/ULjin(RKTL)
RWY 17
LOSTO 6S

Note : Departure under ICAO flight Procedures.

129°30'E



Change : Page control.

129°40'E

INTENTIONALLY

LEFT

BLANK

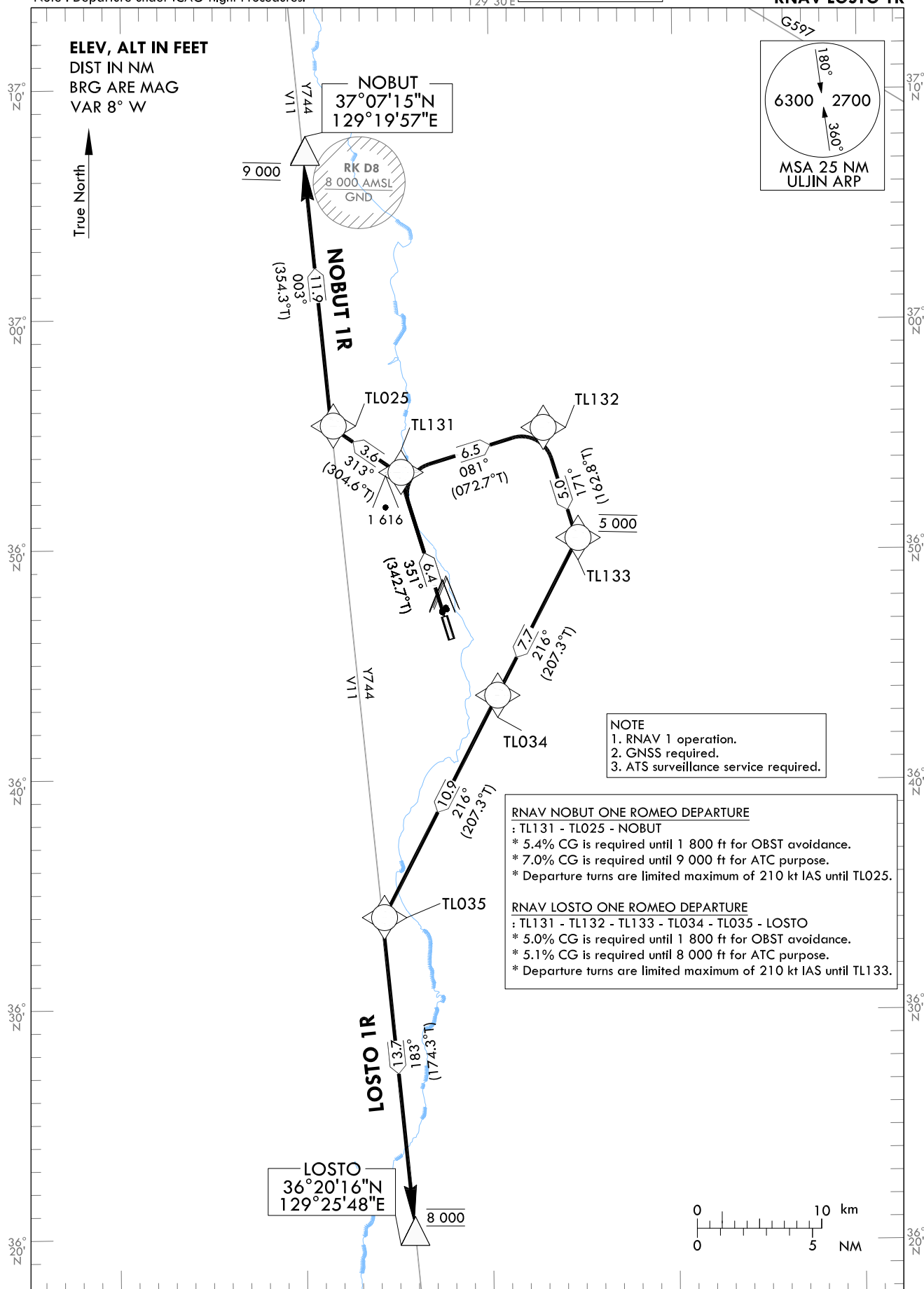
STANDARD DEPARTURE CHART
INSTRUMENT(SID) - ICAO

TRANSITION ALT 14 000
TRANSITION LVL FL 140

ULJIN	DEP	120.875
		317.65
ULJIN	TWR	118.55
		317.45

ULJIN/ULjin(RKTL)
RWY 35
RNAV NOBUT 1R
RNAV LOSTO 1R

Note : Departure under ICAO flight Procedures.



Change : Page control.

AERONAUTICAL DATA TABULATION

Standard Instrument Departure Procedure Coding Tables

RNAV NOBUT 1R									
Serial Number	Path Descriptor	Waypoint Identifier	Fly-over	Course/Track °M(°T)	Distance (NM)	Turn direction	Altitude (ft)	Speed (kt)	Coordinates
001	CF	TL131	-	351(342.7)	6.4	-	-	-210	36°53'20.2"N 129°25'06.2"E
002	TF	TL025	-	313(304.6)	3.6	-	-	-210	36°55'22.2"N 129°21'26.0"E
003	TF	NOBUT	-	003(354.3)	11.9	-	@9 000	-	37°07'15.1"N 129°19'56.6"E
Remarks									
									-
									-
									-

RNAV LOSTO 1R									
Serial Number	Path Descriptor	Waypoint Identifier	Fly-over	Course/Track °M(°T)	Distance (NM)	Turn direction	Altitude (ft)	Speed (kt)	Coordinates
001	CF	TL131	-	351(342.7)	6.4	-	-	-210	36°53'20.2"N 129°25'06.2"E
002	TF	TL132	-	081(072.7)	6.5	-	-	-210	36°55'16.2"N 129°32'50.5"E
003	TF	TL133	-	171(162.8)	5.0	-	@5 000	-210	36°50'27.4"N 129°34'42.0"E
004	TF	TL034	-	216(207.3)	7.7	-	-	-	36°43'35.6"N 129°30'17.9"E
005	TF	TL035	-	216(207.3)	10.9	-	-	-	36°33'54.5"N 129°24'06.6"E
006	TF	LOSTO	-	183(174.3)	13.7	-	@8 000	-	36°20'15.8"N 129°25'48.3"E
Remarks									
									-
									-
									-

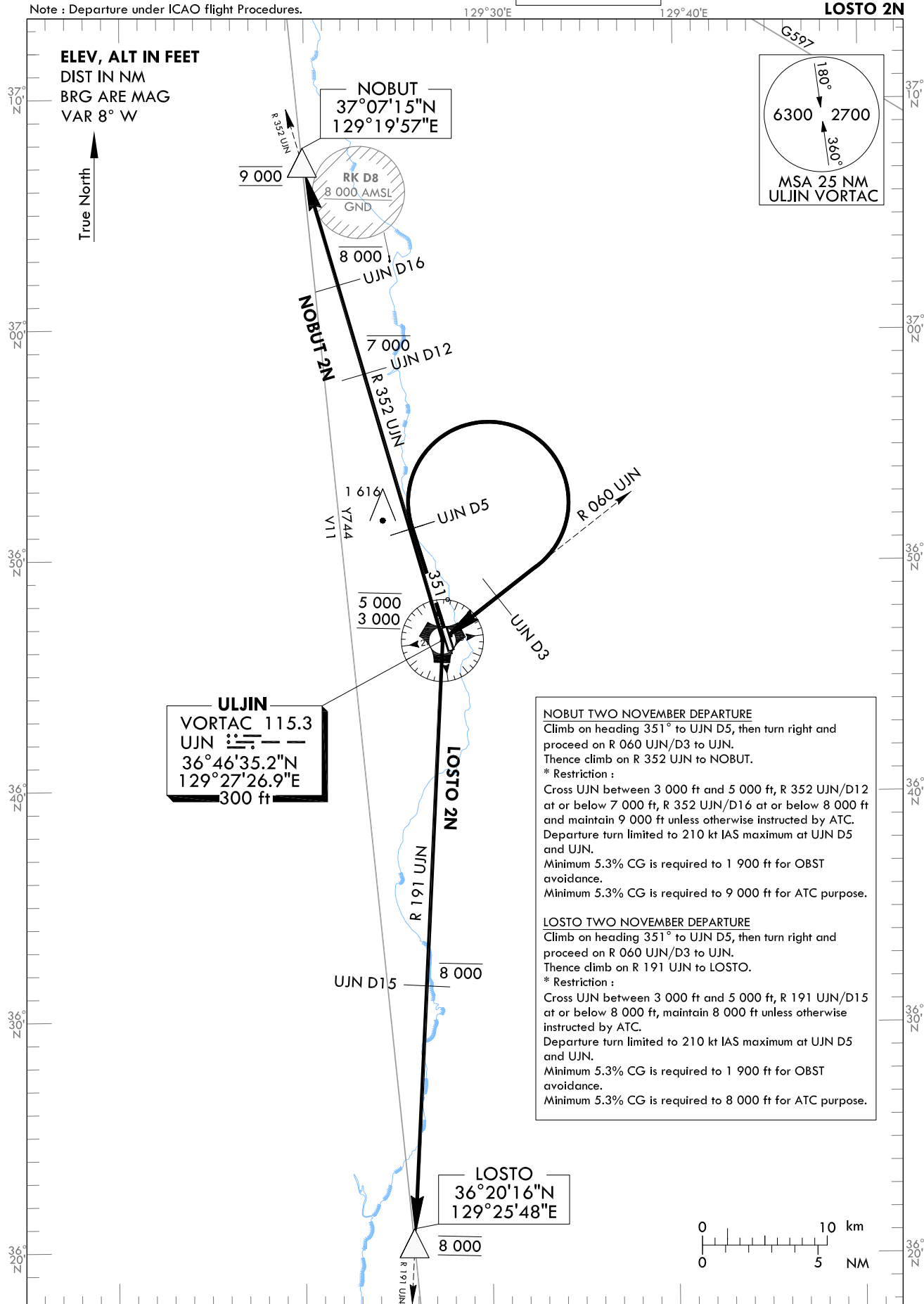
STANDARD DEPARTURE CHART
INSTRUMENT(SID) - ICAO

TRANSITION ALT 14 000
TRANSITION LVL FL 140

ULJIN DEP 120.875
317.65
ULJIN TWR 118.55
317.45

ULJIN/ULjin(RKTL)
RWY 35
NOBUT 2N
LOSTO 2N

Note : Departure under ICAO flight Procedures.



Change : Page control.

INTENTIONALLY

LEFT

BLANK

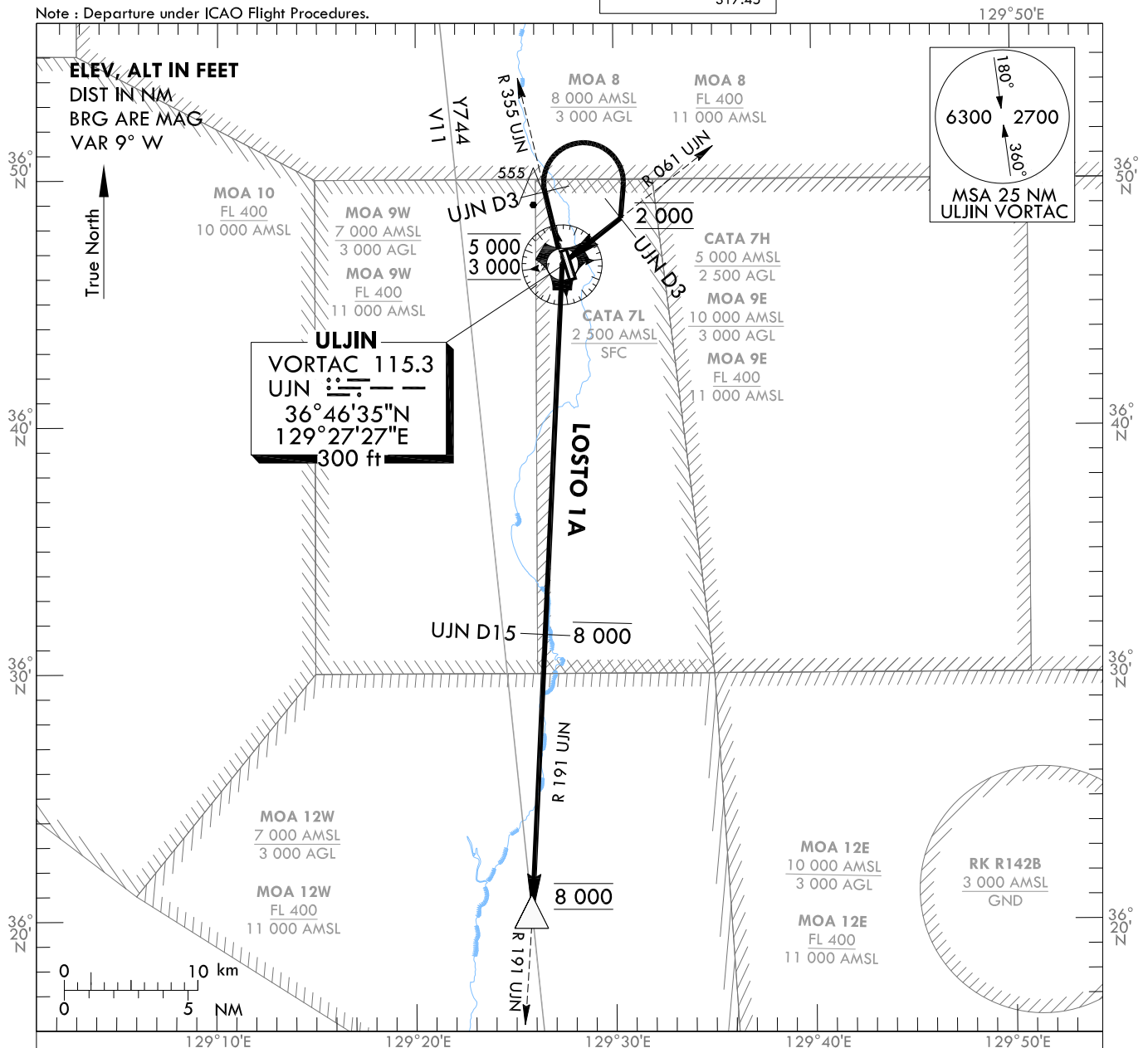
**STANDARD DEPARTURE CHART
INSTRUMENT (SID) - ICAO**

TRANSITION ALT 14 000
TRANSITION LVL FL 140

ULJIN ARR 120.875
317.65
ULJIN TWR 118.55
317.45

**ULJIN/Uijin(RKTL)
RWY 35
LOSTO 1A**

Note : Departure under ICAO Flight Procedures.



LOSTO ONE ALPHA DEPARTURE

Climb on R 355 UJN at UJN D3 turn right and proceed on R 061 UJN/D3 to UJN.
Thence climb on R 191 UJN to LOSTO.

- * Cross R 061 UJN/D3 maintain 2 000 ft, UJN between 3 000 ft and 5 000 ft, R 191 UJN/D15 at or below 8 000 ft, maintain 8 000 ft unless otherwise instructed by ATC.
- * Minimum 5.2% CG is required to 900 ft for OBST avoidance.
- * Minimum 6.5% CG is required to 8 000 ft for ATC purpose.
- * LOSTO 1A should be used for CAT A & B.

INTENTIONALLY

LEFT

BLANK

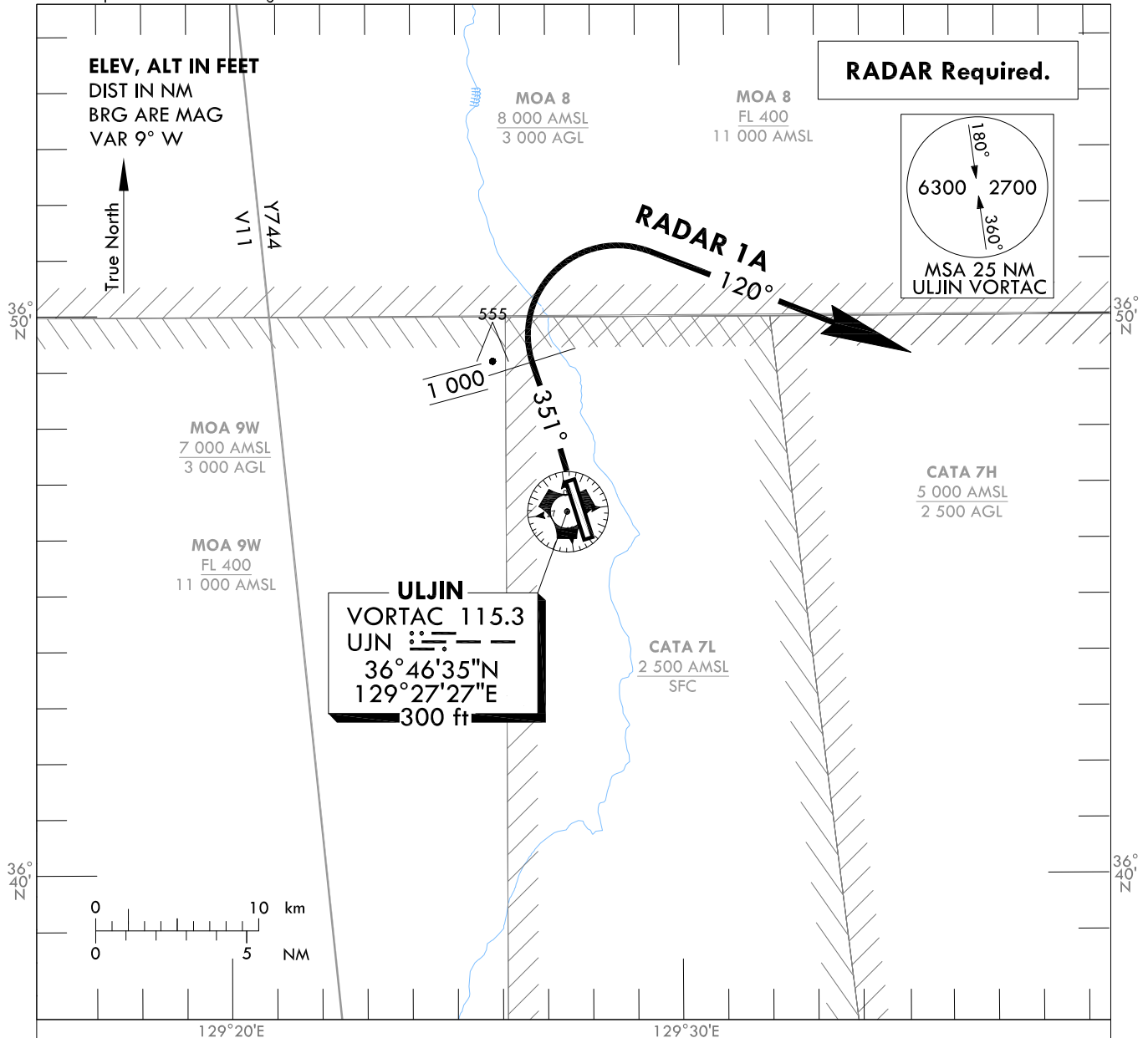
**STANDARD DEPARTURE CHART
INSTRUMENT (SID) - ICAO**

TRANSITION ALT 14 000
TRANSITION LVL FL 140

ULJIN ARR 120.875
317.65
ULJIN TWR 118.55
317.45

**ULJIN/ULjin(RKTL)
RWY 35
RADAR 1A**

Note : Departure under ICAO Flight Procedures.



RADAR ONE ALPHA DEPARTURE

Climb on RWY HDG until reaching 1 000 ft, then turn Right HDG 120° and climb and maintain 2 000 ft for RADAR VECTOR.

- * Minimum 5.2% CG is required to 900 ft for OBST avoidance.
- * Minimum 6.5% CG is required to 2 000 ft for ATC purpose.
- * RADAR 1A should be used for CAT A & B.

Radio communication failure procedure

If no radio contact with ATC, squawk 7600, and unless otherwise instructed by ATC proceed to the last assigned route and altitude.

- * Pilot shall use caution not to penetrate military operation area.

INTENTIONALLY

LEFT

BLANK